

STAR TREK STARSHIP HANDBOOKS

<http://trek.escape-committee.co.uk>

5



trek.escape-committee.co.uk

INTRODUCTION

STAR TREK STARSHIP HANDBOOKS



<http://trek.escape-committee.co.uk>

Volume 5: 22nd Century Vessels

Compiled by Mark Gill - mark.gill@escape-committee.com

<http://trek.escape-committee.co.uk>

First Edition - Summer 2008 - Version 1.11 (3rd July 2010)

INTRODUCTION:

This fifth ebook includes specifications and schematics for nineteen starships from the 22nd century in the Star Trek universe - i.e. from *Star Trek: Enterprise*.

This volume features vessels from all the major powers featured in the series (N.B. The Earth Starfleet *NX*-class, *NV*-class (Intrepid) and *Neptune*-class (warp delta) have been covered already in Volumes One and Two). Only one Xindi ship is included, as there are, to my knowledge, no schematics or orthographic views available of any of the other Xindi designs. If you know of any others I'd be grateful if you could get in touch.

A full list of sources used is included in the bibliography - they're all well worth checking out.

I've endeavoured to contact as many owners of the images and schematics used as possible to ask permission to use them. If I've used your image and haven't managed to reach you, or I've not credited you, my apologies - please email me at the address above.

This ebook has been produced by a fellow fan for reference and fun. All copyrights are acknowledged.

Mark Gill

Contents:

Page	Vessel
1	Contents
2	Earth J Class
4	Earth Y Class
6	Vulcan D'Kyr
8	Vulcan Suurok
10	Vulcan Vahklas
12	Andorian Kumari
14	Klingon Bird-of-Prey
16	Klingon D4
18	Klingon D5
20	Klingon Raptor
22	Romulan Bird-of-Prey
24	Romulan Drone
26	Tholian Warship
28	Suliban Cell Ship I
30	Suliban Cell Ship II
32	Suliban Salvage Ship
34	Suliban Stealth Cruiser
36	Xindi-Aquatic Cruiser
38	Xindi-Insectoid Warship
40	Size Comparison
41	Bibliography

EARTH J CLASS



Class: J

Type: Freighter

Commissioned: 2102

Production Base: Earth

Length: 230 metres

Beam: 74 metres

Height: 38 metres

Mass: 855,000 metric tons

Crew: 15

Cruising Speed: Warp 1.5

Maximum Speed: Warp 2

Armament: 2 Plasma cannons

Known Ships (ECS)

Constellation

Horizon

North Star †

† *Lost or destroyed*

CLASS INFORMATION:

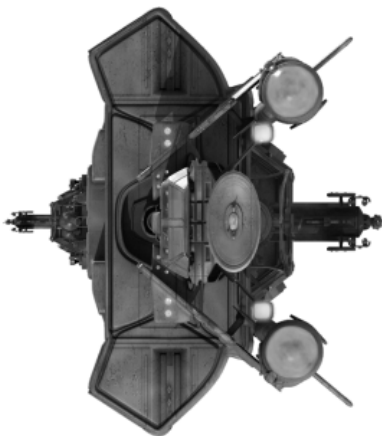
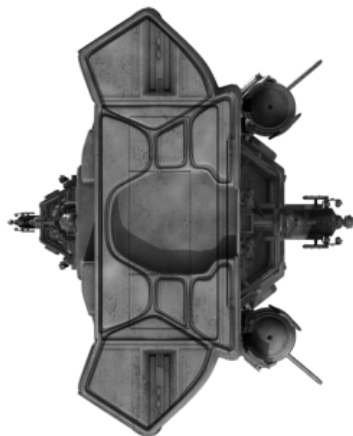
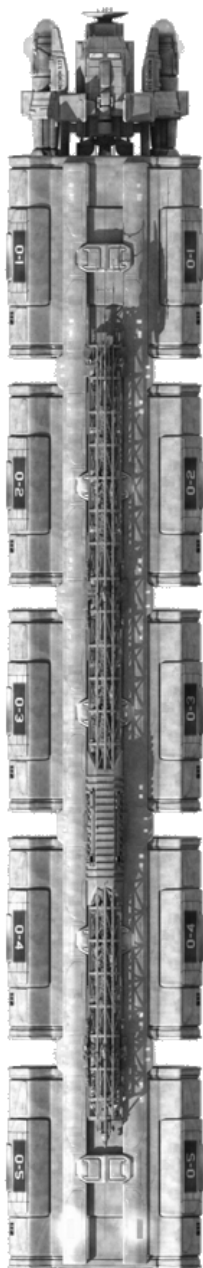
The *J-class* modular freighter was commonly used by the Earth Cargo Service through the first half of the 22nd century. It featured a small accommodation module and two side-mounted nacelles, with up to five cargo pods attached behind.

The *J-class* was well-armed for its size, with two plasma cannons for defence against pirates, and when detached from its cargo pods was very manoeuvrable. Interstellar voyages could take years or even decades, so these freighters were usually crewed by families. By the 2150s *J-class* freighters had a maximum speed of warp two, and were capable of hauling loads of up to 30,000 metric tons.

In 2152, the *Enterprise NX-01* transported Ensign Mayweather to see his family aboard the *Horizon* following the death of his father, the former captain. During his visit the vessel was attacked by pirates which Mayweather helped to fight off.

The *J-class* would eventually be superseded by the larger *Y-class*.





EARTH Y CLASS



Class: Y

Type: Freighter

Commissioned: 2114

Production Base: Earth

Length: 270 metres

Beam: 79 metres

Height: 49 metres

Mass: 634,000 metric tons

Crew: 23

Cruising Speed: Warp 1.5

Maximum Speed: Warp 1.8

Armament: 1 Plasma cannon

ECS Known Ships (ECS)

2801 Fortunate

Ticonderoga †

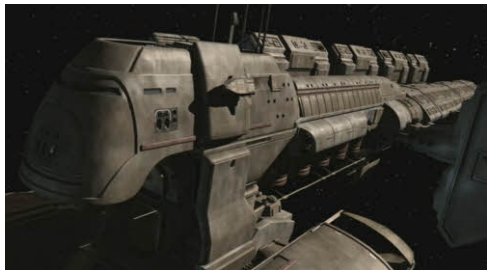
† Lost or destroyed

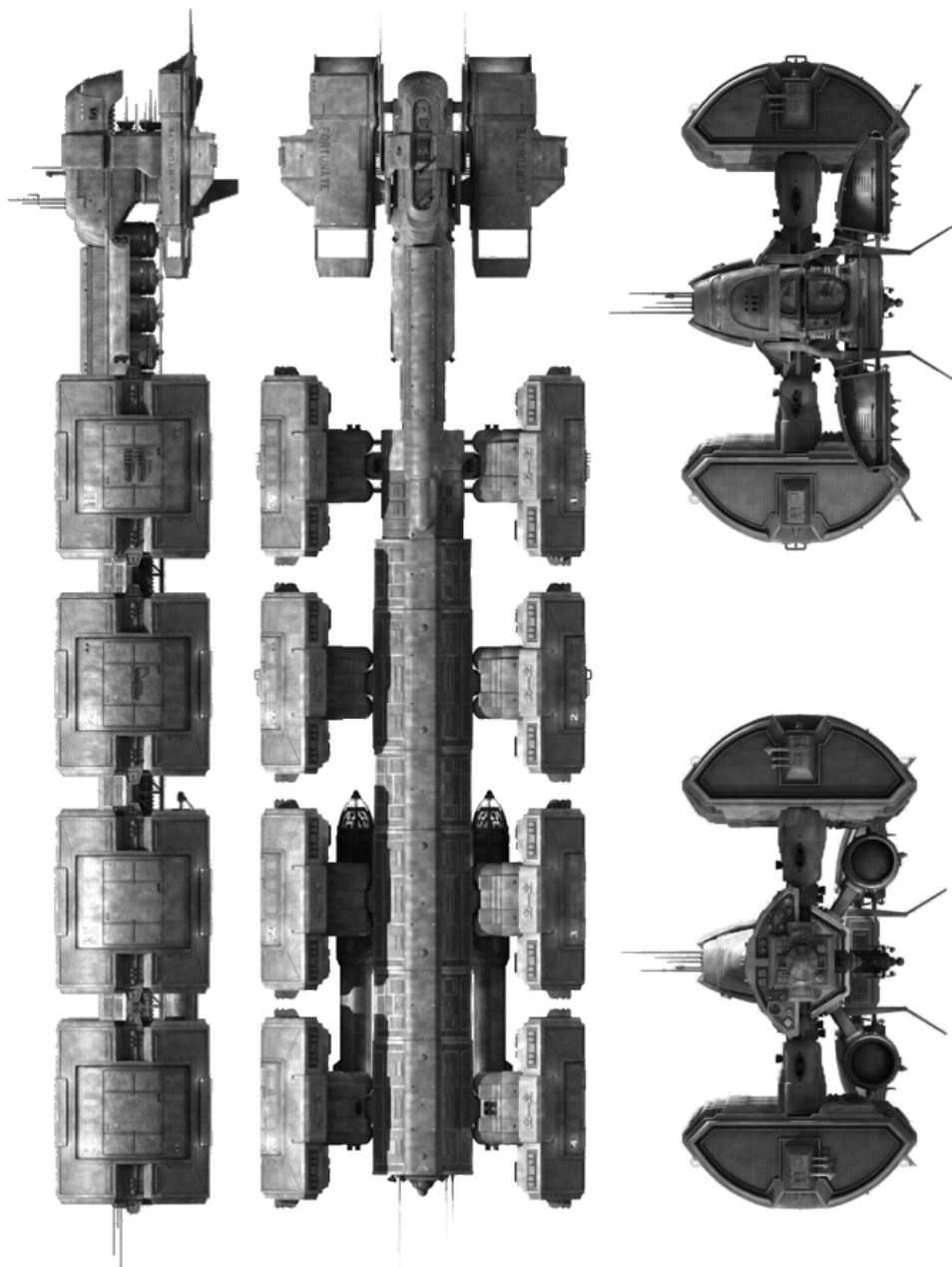
CLASS INFORMATION:

The *Y-class* succeeded the *J-class* as one of Earth's most common freighters in the mid-22nd century. The modular design consisted of a long spine with the bridge and crew accommodation at the bow. Up to eight cargo modules could be attached to the sides of the backbone allowing for over twenty kilotons of freight. The warp nacelles were inboard of the cargo pods near the aft end of the ship.

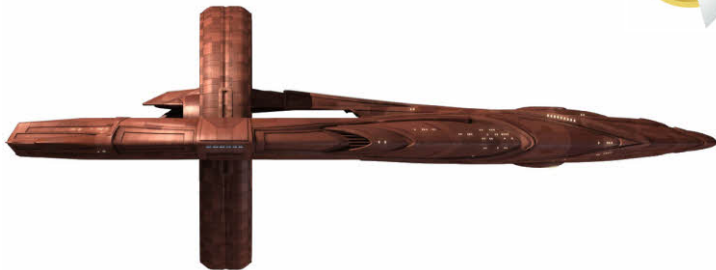
The *Y-class* was lightly armed, with only a single plasma cannon as standard. Most captains had their weapons upgraded to defend against pirates.

In 2151, the *Enterprise NX-01* encountered the *Y-class* Earth Cargo Ship *Fortunate*, commanded by Captain Keene and his first officer Ryan, who were under attack from Nausicaan pirates.





VULCAN D'KYR CLASS



Class: D'Kyr

Type: Combat Cruiser

First Encountered: 2148

Production Base: 40 Eridani A
Construction Yards, Vulcan

Length: 600 metres

Beam: 286 metres

Height: 221 metres

Mass: 4,670,000 metric tons

Crew: 147

Cruising Speed: Warp 6

Maximum Speed: Warp 7

Armament: 6 Particle cannons,
4 photonic torpedo launchers

Known Ships

D'Kyr

Tal'Kyr

Seleya †

† *Lost or destroyed*

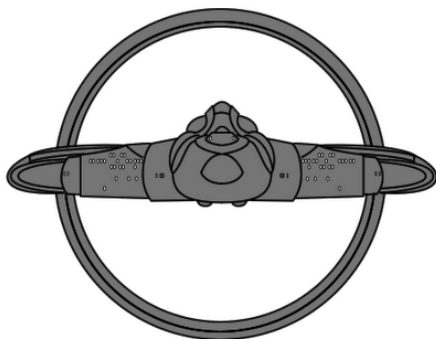
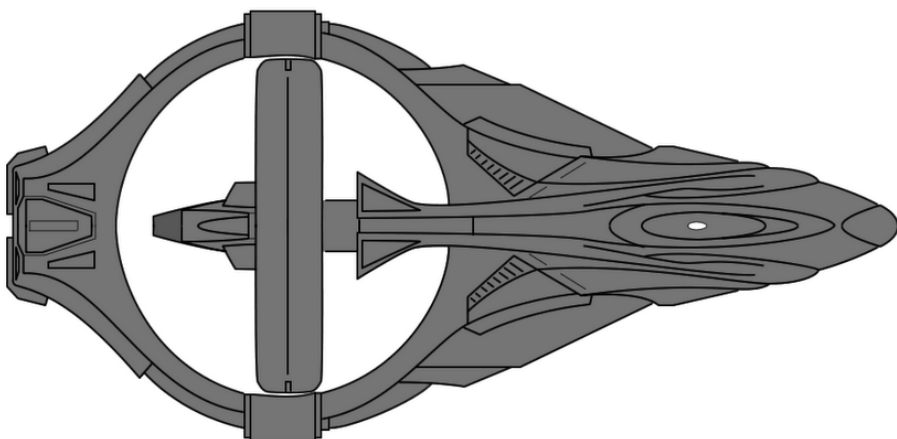
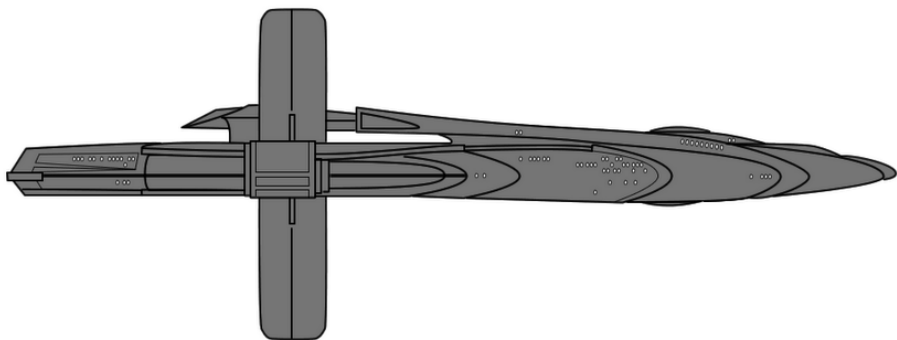
CLASS INFORMATION:

The *D'Kyr*-class was a type of combat cruiser operated by the Vulcan High Command during the mid-22nd century.

As with most Vulcan ships, the *D'Kyr* utilized an annular warp-drive. This was mounted inside a circular split in the ship's hull. A small auxiliary craft was housed inside the engine-ring, which could rotate through ninety degrees to allow the smaller vessel to detach or dock. The *D'Kyr* also featured a large shuttlebay in the mid-section of the ship.

Notable ships of the class included the class ship *D'Kyr*, which rendezvoused with the *Enterprise* NX-01 in 2152; and the *Seleya*, which was caught in a subspace eddy while mapping the perimeter of the Delphic Expanse in the same year. The ship was later discovered adrift inside the expanse by the *Enterprise*.





VULCAN SUUROK CLASS



Class: Surak/Suurok*

Type: Science Vessel/Combat Cruiser*

First Encountered: 2151

Production Base: 40 Eridani A Construction Yards, Vulcan

Length: 600 metres

Beam: 189 metres

Height: 171 metres

Mass: 4,830,000 metric tons

Crew: 420

Cruising Speed: Warp 5.5/6*

Maximum Speed: Warp 6.5/7*

Armament: 6 Particle cannons, 4 photonic torpedo launchers

Known Ships

Ni'Var

Sh'Raan *

Surak

Suurok

Ti'Mur

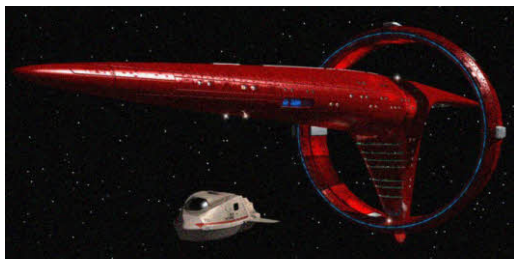
* *Variant*

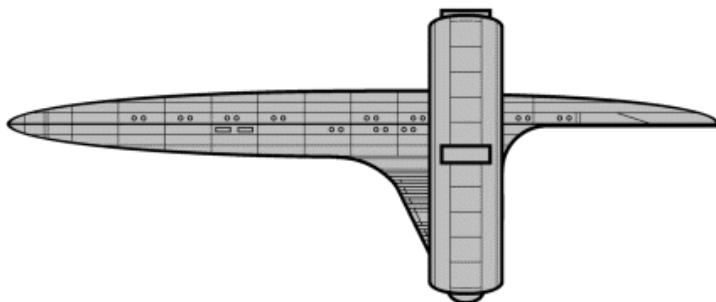
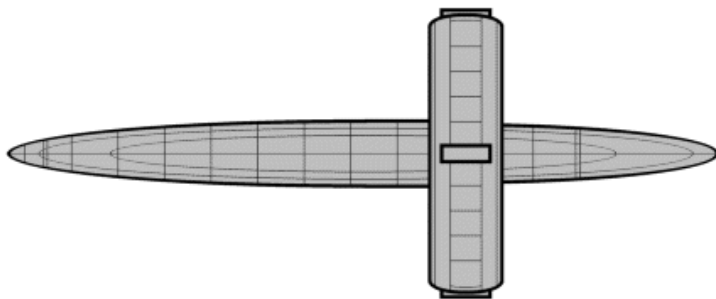
CLASS INFORMATION:

The *Suurok*-class (also often referred to as *Surak*-class) was among the fastest and most powerful vessels in the Vulcan fleet in the 2150s. As with the *D'Kyr*-class, the *Suurok* featured an annular warp drive, though in this case the engine-ring was fixed. Two versions of the class existed - the original science vessel configuration and an uprated combat cruiser variant, the latter capable of slightly higher speeds.

The *Suurok* possessed tractor beam technology which was considered classified from Earth Starfleet at the time. The tractor beam emitter was located on the lower section of the primary hull, in front of the warp drive. The class also carried much more powerful weaponry than Starfleet equivalents of the time.

Notable *Suurok*-class ships included the *Ti'Mur*, which rescued *Enterprise* NX-01 personnel from a fissure in the surface of a comet in 2151; and the *Sh'raan*, which aided the *Enterprise* in fighting off three Mazarite cruisers the following year.





VULCAN VAHKLAS CLASS



Class: Vahklas

Type: Transport/Light Cruiser

First Encountered: 2151

Production Base: 40 Eridani A
Construction Yards, Vulcan

Length: 110 metres

Beam: 49 metres

Height: 35 metres

Mass: 4,210 metric tons

Crew: 10

Cruising Speed: Warp 5

Maximum Speed: Warp 5.5

Armament: 2 Particle cannons,
1 photonic torpedo launcher

Known Ships

Vahklas

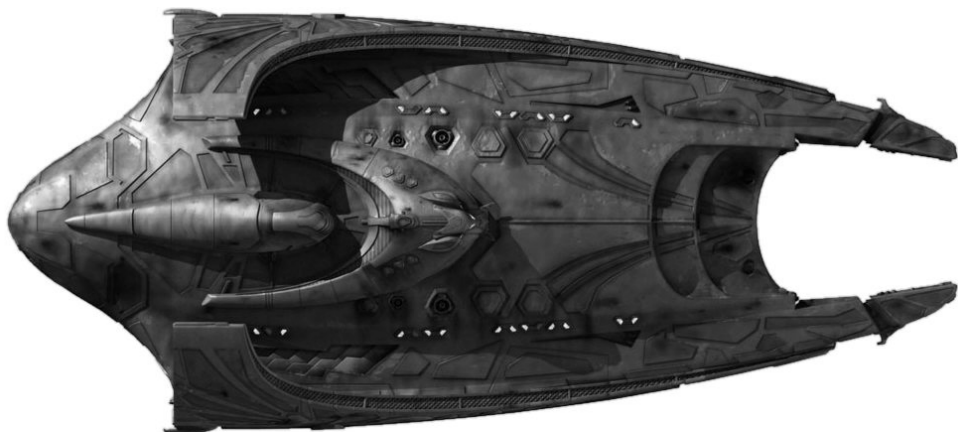
CLASS INFORMATION:

The *Vahklas*-class was a type of Vulcan transport used in the early 22nd century. The *Vahklas* sported distinctive curving warp nacelles - a design feature which would eventually progress into the full ring structure of later Vulcan vessels.

By the midpoint of the century the *Vahklas*-class was considered obsolete, though a handful of ships remained in use by civilians. However, by 2154 a number of *Vahklas*-class vessels had been refitted and reactivated by the Vulcan High Command. Some of these modified cruisers took part in the Battle of Andoria.

The *Enterprise* NX-01 encountered the *Vahklas* while charting the Arachnid Nebula in 2151. The passengers and crew claimed to be V'tosh ka'tur - Vulcans who disagreed with many of Surak's teachings and did not repress their emotions.





ANDORIAN KUMARI CLASS



Class: Kumari

Type: Battlecruiser

First Encountered: 2152

Production Base: Epsilon Indi
Construction Yards, Andoria

Length: 360 metres

Beam: 183 metres

Height: 52 metres

Mass: 80,000 metric tons

Crew: 86

Cruising Speed: Warp 5.5

Maximum Speed: Warp 5.9

Armament: 4 Particle cannons,
3 photonic torpedo launchers

Known Ships

Kumari †

† *Lost or destroyed*

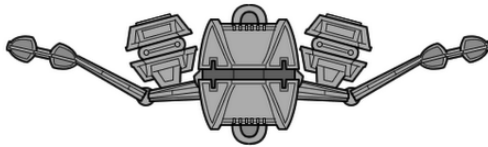
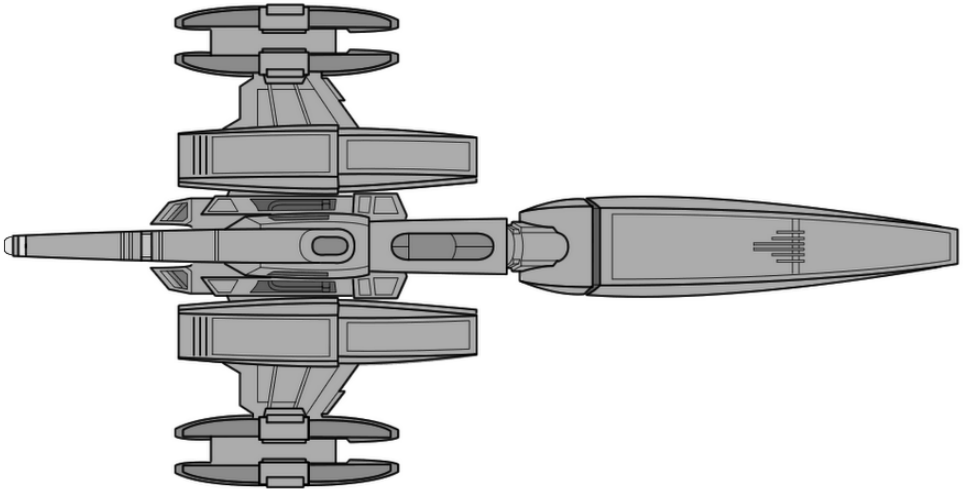
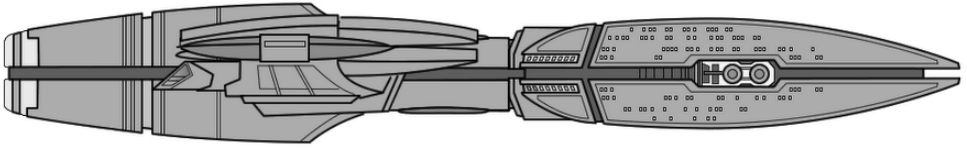
CLASS INFORMATION:

The *Kumari*-class battlecruiser was the mainstay of the Andorian Imperial Guard's fleet in the 22nd century. The ship's hull was composed of duranium and featured a long central spine with a forward crew module. The warp nacelles were mounted on the wing structures to port and starboard, with large impulse engines at the stern.

Kumari-class ships were armed with particle cannons, and utilized shield technology. Additional equipment included transporters, tractor beams, and large cargo and shuttle bays on the ventral side of the ship which could be shielded to protect against radioactive cargo.

The lead vessel, *Kumari*, was named after the first ice cutter to circumnavigate Andoria, and was commanded by Shran from 2142. The *Kumari* was destroyed by a Romulan drone ship posing as a Tellarite vessel, while escorting the Andorian ambassador to a trade conference on Babel in November 2154.





KLINGON BIRD-OF-PREY



Class: Bird-of-Prey

Type: Scout

First Encountered: 2153

Production Base: Qo'noS

Orbital Factory Base

Length: 115 metres

Beam: 120 metres

Height: 48 metres

Mass: 28,000 metric tons

Crew: 18

Cruising Speed: Warp 5.1

Maximum Speed: Warp 5.8

Armament: 8 Disruptor
cannons, 2 photon torpedo
launchers

Known Ships (IKS)

Names unknown

CLASS INFORMATION:

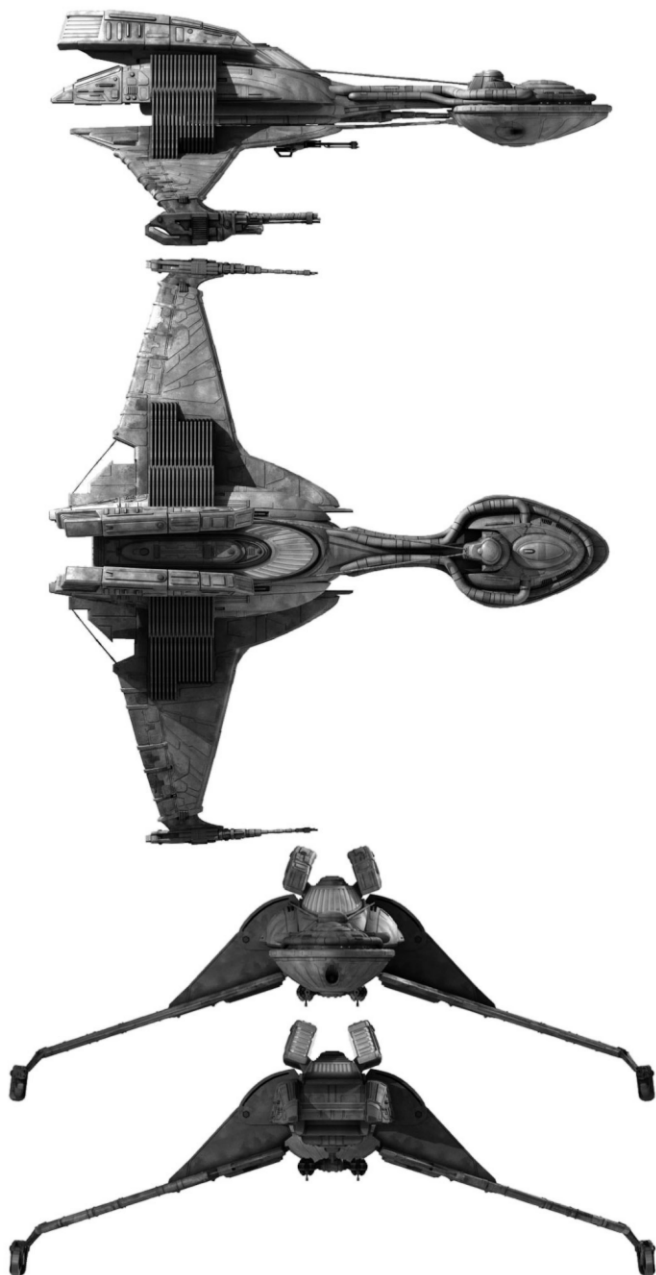
Comparable in design to its sister classes, the *Raptor* and *D5*, the smaller *Bird-of-Prey* utilized an avian design, including feather-like hull plating on its wings.

The bridge module was located in the bulbous forward section, while the shuttlebay, impulse engines and warp nacelles were housed in the larger aft section of the ship. The *Bird-of-Prey's* arsenal was impressive for the time, with multiple disruptor mounts and forward and aft torpedo launchers. The ship's defensive systems included dispersive armour around the bridge, and deflector shields.

Earth Starfleet first encountered the *Bird-of-Prey* when Duras mounted a revenge attack on the returning *Enterprise* NX-01 on the outskirts of the Sol system in 2153.

The *Bird-of-Prey* design would be revamped and developed, resulting in the *B'rel* and *K'Vort*-class vessels of the 23rd and 24th centuries.





KLINGON D4 CLASS



Class: D4

Type: Battlecruiser

First Encountered: 2151

Production Base: Qo'noS
Orbital Factory Base

Length: 205 metres

Beam: 136 metres

Height: 45 metres

Mass: 82,500 metric tons

Crew: 295

Cruising Speed: Warp 7

Maximum Speed: Warp 8

Armament: 4 Disruptor
cannons, 2 photon torpedo
launchers

Known Ships (IKS)

D'ama ꞑ

ꞑ *Non-canon*

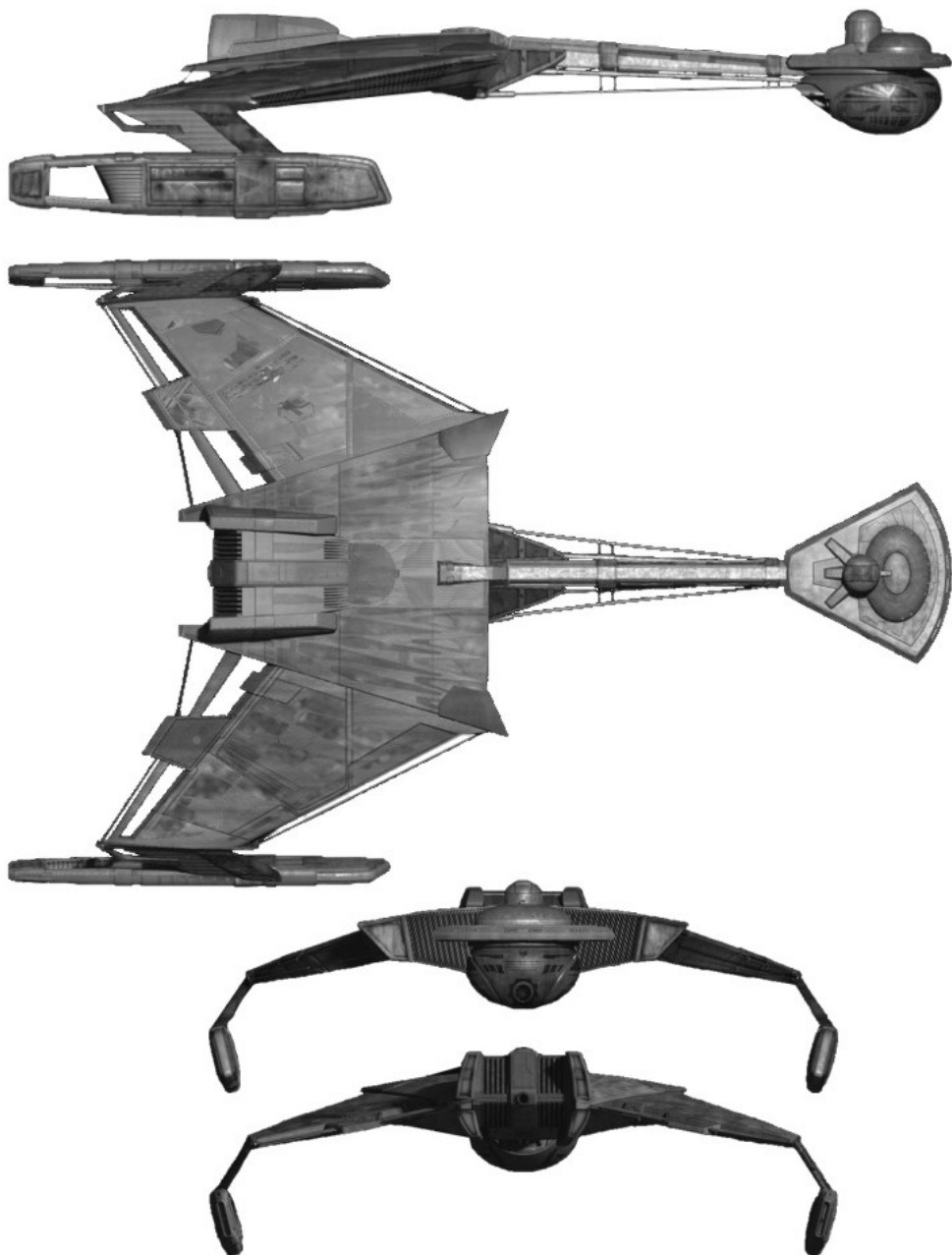
CLASS INFORMATION:

The predecessor to the infamous *D7* and *K't'inga*-classes, the *D4*-class battlecruiser entered service in the 22nd century, and by the early 23rd century was the mainstay of the Klingon Imperial Fleet.

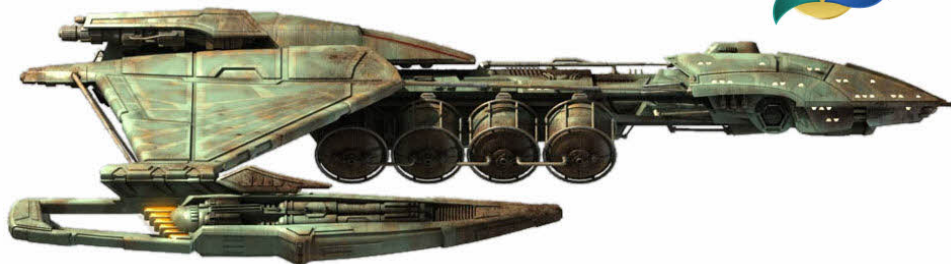
The *D4* was armed with disruptors and fore and aft photon torpedo launchers. It also featured deflector shield technology and an aft tractor beam. Like other 22nd century Klingon designs, the *D4* was fitted with additional support struts between the command and engineering hulls, as well as along the edges of the wing-structures, to augment structural integrity.

Some *D4*s served into the 2260s and Starfleet included them in Klingon tactical simulations, where they fought alongside the later *D7*-class against *Constitution*-class vessels.





KLINGON D5 CLASS



Class: D5

Type: Battlecruiser/Deuterium Tanker

First Encountered: 2152

Production Base: Qo'noS
Orbital Factory Base

Length: 155 metres

Beam: 145 metres

Height: 42 metres

Mass: 183,000 metric tons

Crew: 20

Cruising Speed: Warp 5

Maximum Speed: Warp 6

Armament: 4 Disruptor cannons, 2 photon torpedo launchers

Known Ships (IKS)

Bortas

Klothos

CLASS INFORMATION:

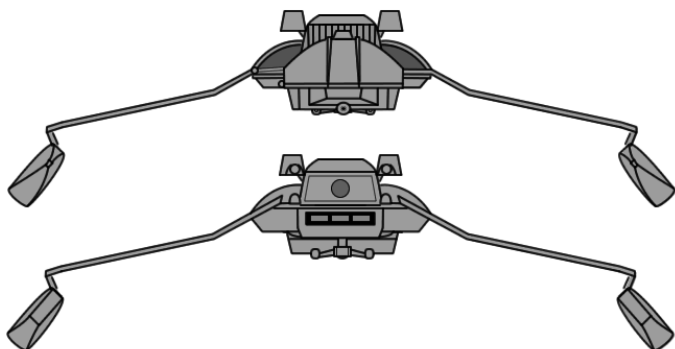
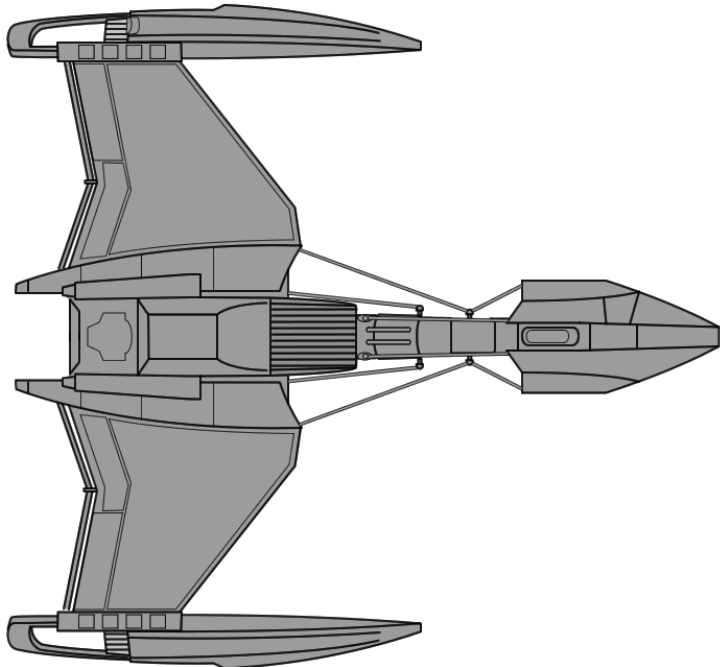
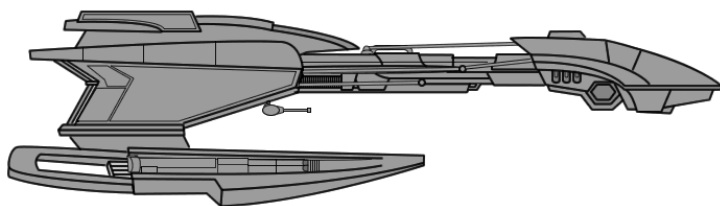
The *D5*-class was the principal battlecruiser design of the Klingon Imperial Fleet during the mid-22nd century. Like many of its contemporaries and successors, the *D5* was distinguished by a roughly bird-like form, with an elongated primary hull and angular wings and warp nacelles.

A fully-armed *D5* was considerably more advanced than Earth Starfleet's most powerful vessel during the 2150s, the *NX*-class starship. Like its *Raptor*-class counterpart of the same era, the *D5* was outfitted with multi-spectral sensors as well as disruptors, photon torpedo launchers and dispersive armour.

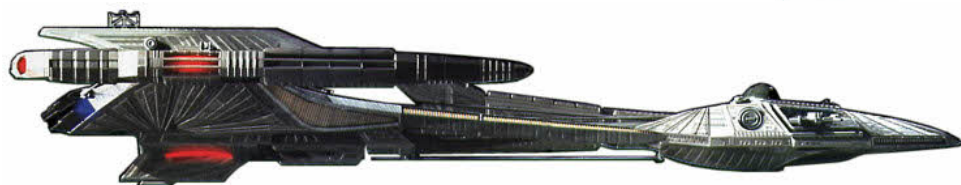
Some *D5*s were modified as deuterium tankers, with eight underslung tanks. These versions carried significantly less armament than their cruiser counterparts.

Notable *D5*s included the *I.K.S. Bortas*, commanded by Duras, which was foiled in its pursuit of refugees from Rha'darus by the *Enterprise NX-01* in 2152; and the *I.K.S. Klothos*, the former command of Dahar Master Kor.





KLINGON RAPTOR CLASS



Class: Raptor

Type: Scout

First Encountered: 2151

Production Base: Qo'noS
Orbital Factory Base

Length: 145 metres

Beam: 111 metres

Height: 27 metres

Mass: 90,000 metric tons

Crew: 12

Cruising Speed: Warp 5

Maximum Speed: Warp 6

Armament: 2 Disruptor
cannons, 1 photon torpedo
launcher

Known Ships (IKS)

Somraw

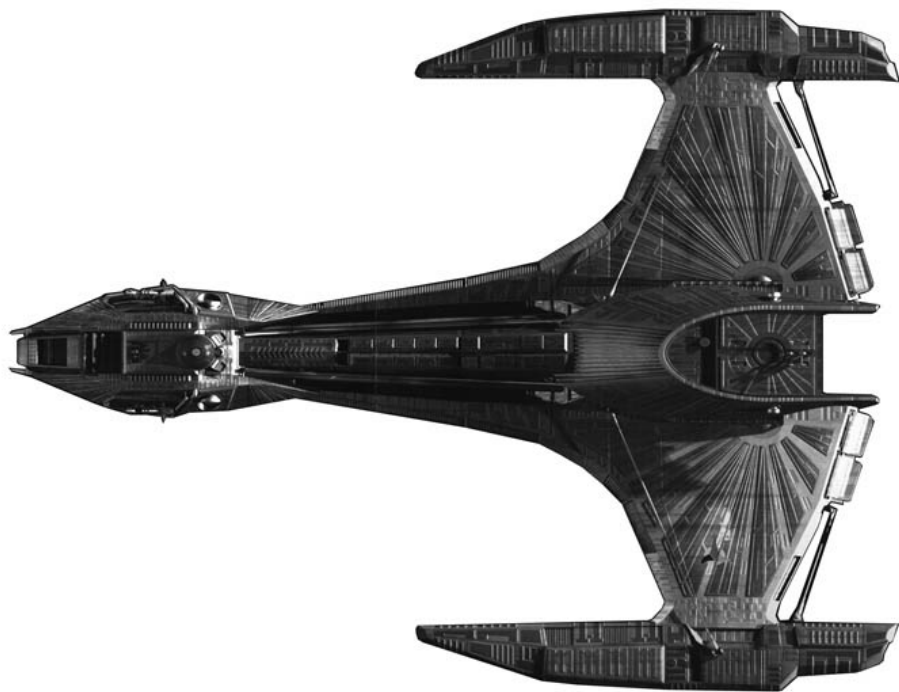
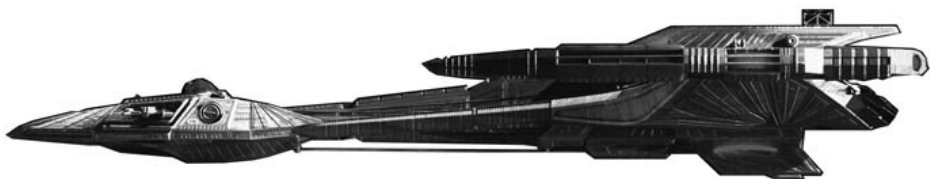
CLASS INFORMATION:

The *Raptor*-class was designed for short and medium range reconnaissance missions and swift attacks. The ship was first encountered by the Vulcans prior to 2151, and the accepted *Raptor*-class name is thought to have been coined by them.

As with other Klingon vessels built prior to the Klingon-Romulan alliance of the 23rd century, the *Raptor* did not carry a cloaking device. However it did feature deflector shields and dispersive armour, despite being only relatively lightly armed. The warp nacelles were situated at the end of the *Raptor's* up-swept wings.

The first Earth encounter with a *Raptor* came in 2151, when the *Enterprise* NX-01 rescued the disabled *I.K.S. Somraw* from within the atmosphere of a gas giant. This was also the first time Starfleet personnel explored the inside of a Klingon vessel.





ROMULAN BIRD-OF-PREY



Class: Bird-of-Prey

Type: Attack Ship

First Encountered: 2152

Production Base: Unknown,

Romulan Star Empire

Length: 165 metres

Beam: 182 metres

Height: 40 metres

Mass: Unknown

Crew: 100

Cruising Speed: Warp 3

Maximum Speed: Warp 5

Armament: 2 Plasma cannons,
4 photon torpedo launchers

Known Ships (IRW)

Praetor Pontilus ⚔†

⚔ *Non-canon*

† *Lost or destroyed*

CLASS INFORMATION:

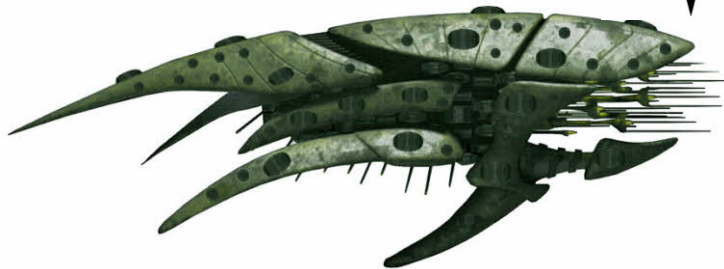
A mainstay of the 22nd century Romulan fleet, the distinctive Romulan *Bird-of-Prey* would be developed and improved into the 2260s. The early *Bird-of-Prey*'s warp nacelles bore a strong resemblance to those of the Klingon *Raptor*, suggesting a possible technology exchange between the two powers. The ship was equipped with advanced weaponry for the time, and initially a cloaking device.

The *Enterprise* NX-01 first encountered a Romulan *Bird-of-Prey* in mid-2152 when it accidentally entered a cloaked minefield. The *Praetor Pontilus* was one of two prototype cloaking ships which forced the Earth vessel to leave. Sometime afterward the *Pontilus* was destroyed in an antimatter containment failure caused by the vast power requirements of the cloak. It would subsequently be decades before the Romulans would successfully perfect a working starship cloaking device.





ROMULAN DRONE SHIP



Class: Drone
Type: Modified Warbird
First Encountered: 2154
Production Base: Unknown, Romulan Empire
Length: 35 metres
Beam: 14.3 metres
Height: 9.4 metres

Mass: Unknown
Crew: 0
Cruising Speed: Warp 3
Maximum Speed: Warp 5
Armament: Tri-phasic emitters

Known Ships (IRW)
Raptor †
† *Lost or destroyed*

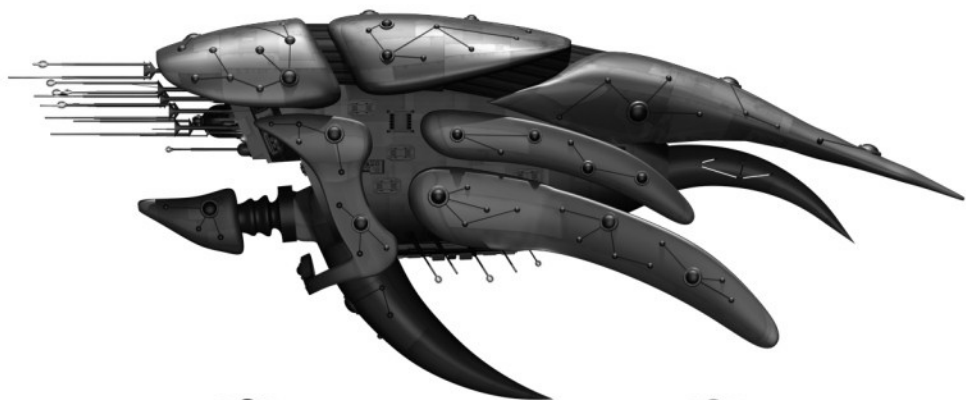
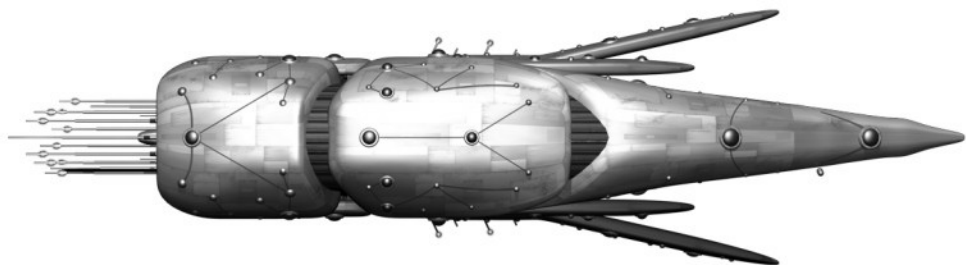
CLASS INFORMATION:

The Romulan drone ship was an advanced experimental attack ship developed in the 2150s. The starship itself was a modified Romulan Warbird designed to be remotely controlled from Romulus by an Aenar pilot using a telepresence unit.

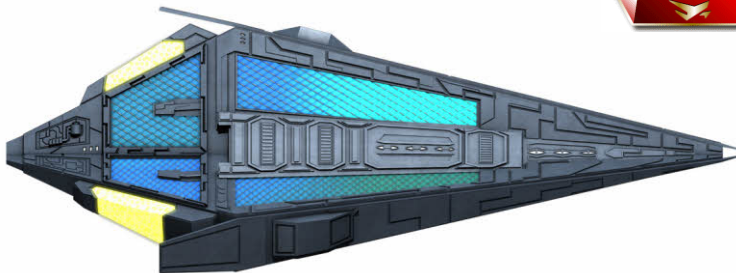
The drone ship was equipped with a multi-spatial emitter system, which allowed it to assume the appearance of nearly any other vessel. Additionally, the drone's tri-phasic disruptors could mimic the weapon signatures of other ships. Its ability to self-repair also proved an asset during battle, where damage could begin to be corrected almost immediately. The drone was also highly manoeuvrable as with no crew, life-support and inertial damping power could be diverted to the engines.

Two prototype drones were launched in 2154 to try destabilise political alliances in the region, but were destroyed when their Aenar pilot turned them on one another.





THOLIAN WARSHIP



Class: Tri-Axil Delta

Type: Warship

First Encountered: 2152

Production Base: Unknown,

Tholian Assembly

Length: 15 metres

Beam: 6.3 metres

Height: 5.5 metres

Mass: Unknown

Crew: Unknown

Cruising Speed: Unknown

Maximum Speed: Unknown

Armament: 1 Plasma torpedo launcher, 1 Tholian web generator

Known Ships

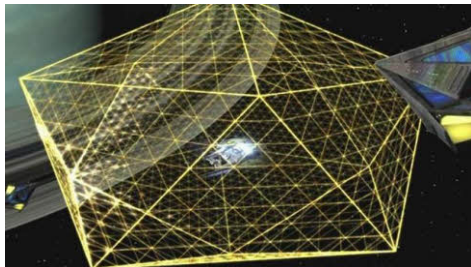
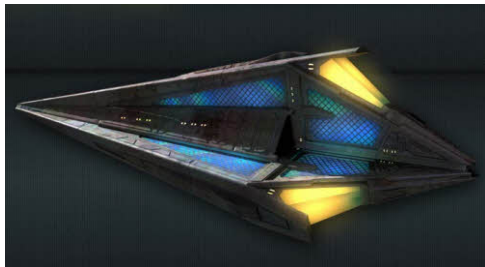
Names unknown

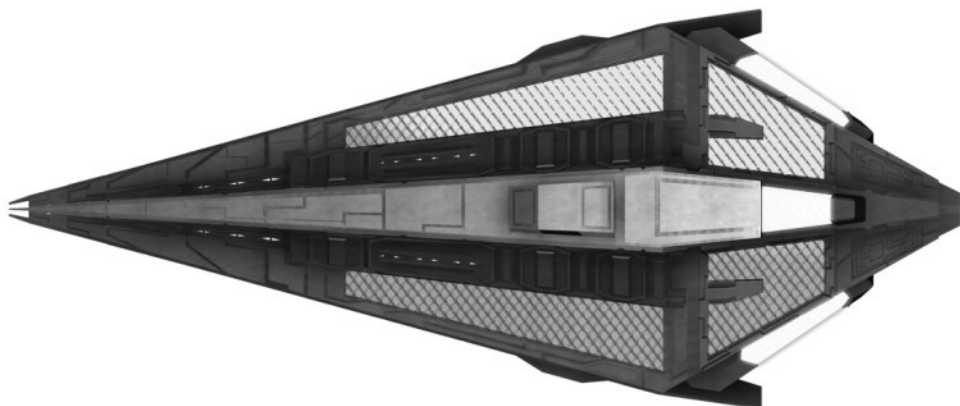
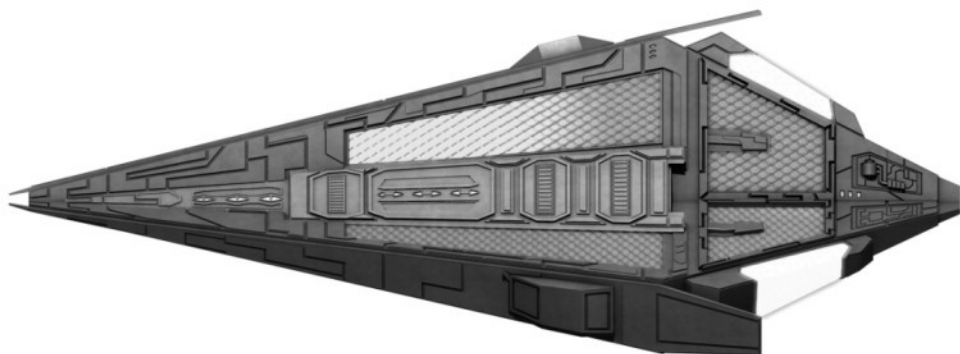
CLASS INFORMATION:

The 22nd century Tholian warship was a relatively small starship with a tapered shape characteristic of Tholian designs. It was outfitted with formidable armament for its size, including an energy dampening weapon which could render some enemy vessels almost completely powerless. The interiors of Tholian ships were kept at temperatures exceeding two hundred degrees celsius to mimic the harsh, hot environment in which the Tholians lived.

Tholian ships could generate a web of energy filaments to ensnare an immobilised enemy vessel. The more ships that were used to generate the web, the faster it could be deployed. Once a web was completed it became self-generating.

In 2152, a fleet of Tholian warships attacked the Vulcan cruiser *Tal'Kir*, a number of Suliban cell ships, and the *Enterprise* NX-01, to capture a 31st century time pod.





SULIBAN CELL SHIP (SHORT)



Class: Cell Ship (Short)

Type: Fighter

First Encountered: 2151

Production Base: Unknown,
Sector 3641

Length: 2.6 metres

Beam: 2.6 metres

Height: 2.53 metres

Mass: 7 metric tons

Crew: 1

Cruising Speed: Warp 5

Maximum Speed: Unknown

Armament: 1 Particle cannon

Known Ships

Names unknown

CLASS INFORMATION:

The most numerous ship type of the Suliban Cabal during the mid-22nd century, short *cell ships* were typically piloted by a single individual. They were armed with a single high-yield particle beam weapon and could be equipped with a cloaking device and tractor beam.

Cell ships could link together to create larger structures, such as a helix, as well as connect to a salvage ship. They were capable of speeds in excess of warp five, and usually travelled in large groups along with their longer counterparts.

The *Enterprise NX-01* discovered hundreds of *cell ships* docked to a Suliban helix space station during its maiden mission in 2151. The *Enterprise* subsequently captured a short *cell ship* while attempting to rescue the Klingon, Klaang.





SULIBAN CELL SHIP (LONG)



Class: Cell Ship (Long)
Type: Modular space vessel
First Encountered: 2152
Production Base: Unknown, Sector 3641
Length: 40 metres
Beam: 15.4 metres
Height: 7.93 metres

Mass: 1,000 metric tons
Crew: Unknown
Cruising Speed: Warp 5
Maximum Speed: Unknown
Armament: 1 Particle cannon

Known Ships
Names unknown

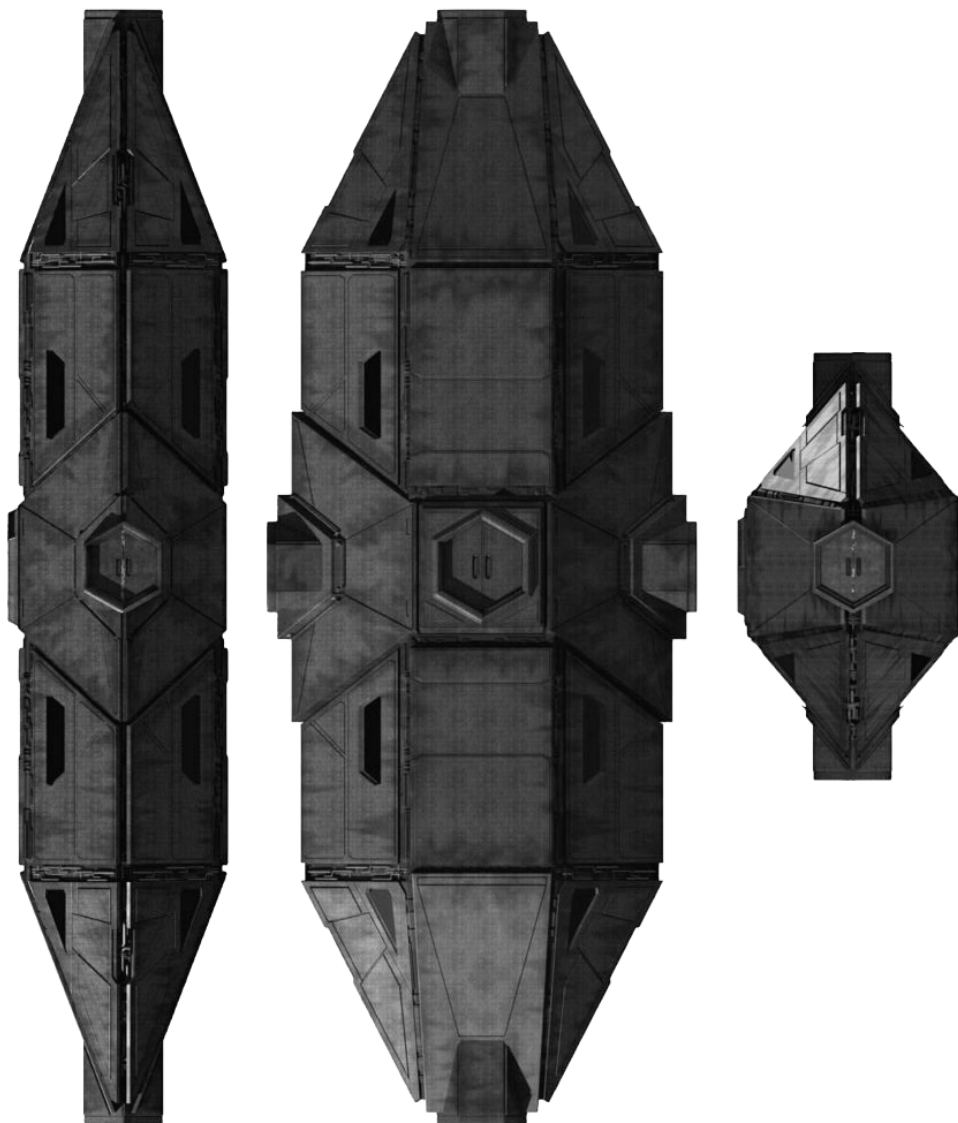
CLASS INFORMATION:

Larger and more robust than its cousin, the short *cell ship*, the long *cell ship* was less common. Very little is known about these larger versions as one has never been examined by humans at close-hand. However, like the shorter type, the long *cell ship* was equipped with high-yield particle beam weapons, a tractor beam and a cloaking device. They were typically used in offensive and troop transport roles.

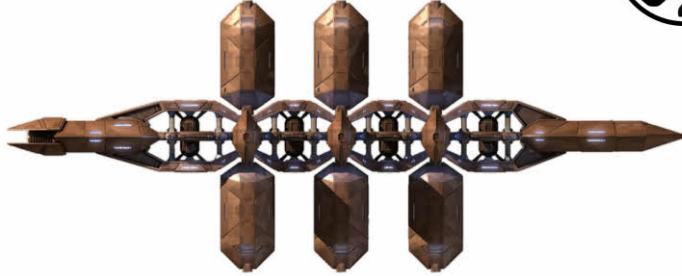
Long *cell ships* featured docking ports fore and aft and on both flanks, allowing them to connect together or assemble into larger structures in a similar fashion to short *cell ships*.

The *Enterprise NX-01* encountered these vessels on several occasions during the course of its involvement in the Temporal Cold War from 2151-54 .





SULIBAN SALVAGE SHIP



Class: Salvage Ship

Type: Freighter

First Encountered: 2152

Production Base: Unknown,
Sector 3641

Length: 240 metres

Beam: 96 metres

Height: 96 metres

Mass: 18,000 metric tons

Crew: Unknown

Cruising Speed: Warp 5

Maximum Speed: Unknown

Armament: 2 Particle cannons

Known Ships

Names unknown

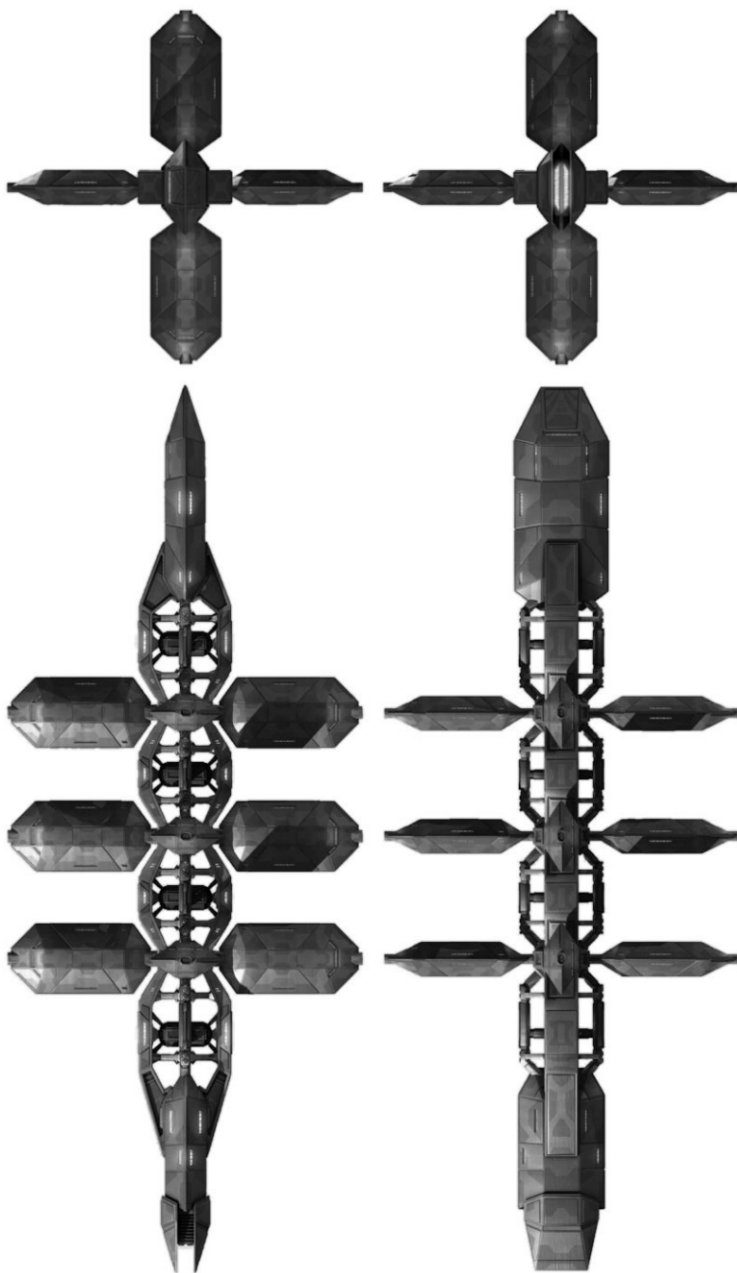
CLASS INFORMATION:

The Suliban salvage ship was a modular freighter operated by the Suliban Cabal. The design of the ship consisted of a long central spine with up to twelve long *cell ships* docked around it. The core section was presumed to contain the ship's command and propulsion sections.

The salvage ship was minimally armed, with at least one forward and aft particle cannon. It was also equipped with a transporter system, tractor beam and cloaking device, and was capable of exceeding warp factor five.

In late 2152, the *Enterprise NX-01* encountered one of these ships while trying to salvage a 31st century time pod. It was destroyed, along with the *cell ships* escorting it, by a group of Tholian starships also attempting to claim the craft.





SULIBAN STEALTH CRUISER



Class: Stealth Cruiser

Type: Cruiser

First Encountered: 2152

Production Base: Unknown,
Sector 3641

Length: 106 metres

Beam: 50.6 metres

Height: 16.4 metres

Mass: Unknown

Crew: 20

Cruising Speed: Unknown

Maximum Speed: Unknown

Armament: 4 Particle cannons

Known Ships

Names unknown

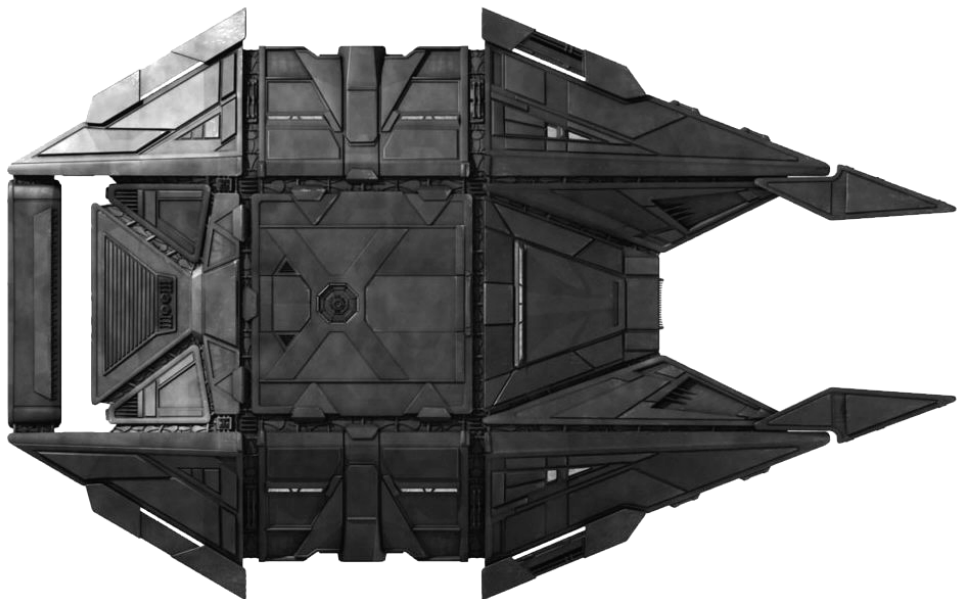
CLASS INFORMATION:

The Suliban stealth cruiser was a sophisticated and comparatively large starship used by the Suliban Cabal that carried a cloaking device, rendering it undetectable by mid-22nd century Human technology. Its armament included four particle beam weapon banks. The standard crew complement was no more than twenty.

In March 2152, a Suliban stealth cruiser planted a small device on one of the *Enterprise* NX-01's shuttlepods that emitted a plasma stream, resulting in the destruction of the colony on Paraagan II.

The cruiser was later discovered by the *Enterprise* in a nearby binary star system using quantum beacons provided by Temporal Cold War agent Daniels. A boarding party successfully retrieved data from the ship confirming that the Suliban were responsible for the colony's destruction.





XINDI-AQUATIC CRUISER



Class: Unknown
Type: Cruiser
First Encountered: 2154
Production Base: Unknown, Delphic Expanse
Length: 1,800 metres
Beam: 1,574 metres
Height: 186 metres

Mass: Unknown
Crew: Unknown
Cruising Speed: Unknown
Maximum Speed: Unknown
Armament: Particle cannons

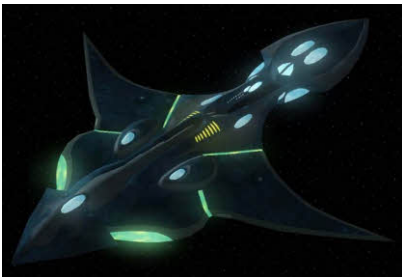
Known Ships
Names unknown

CLASS INFORMATION:

The flagship of the Xindi-Aquatic fleet, the Xindi-Aquatic cruiser was the largest and most advanced vessel used by any of the Xindi species. The cruiser featured a hydrodynamic, swept-wing hull with a large hangar bay on the ventral side of the ship that could be used to carry smaller starships. A large portion of the ship was filled with water, but it also had at least one small room where oxygen-breathing humanoids could come aboard and communicate with the Aquatic crew.

The Xindi-Aquatic cruiser was heavily-armed but had limited conventional propulsion systems. However, it could open a subspace vortex, enabling transwarp-like travel, reducing transit time from the Delphic Expanse to Earth to just ten hours.

One of these cruisers took part in the battle to stop the Xindi superweapon after it was commandeered by the Xindi-Reptilians. It was disabled during the battle by a spatial anomaly generated by a nearby Sphere.





XINDI-INSECTOID WARSHIP



Class: Unknown

Type: Warship

First Encountered: 2154

Production Base: Unknown,
Delphic Expanse

Length: 120 metres

Beam: 86 metres

Height: 70 metres

Mass: 40,000 metric tonnes

Crew: 60

Cruising Speed: Warp 4

Maximum Speed: Warp 5

Armament: 4 Particle cannons,
3 torpedo launchers

Known Ships

Names unknown

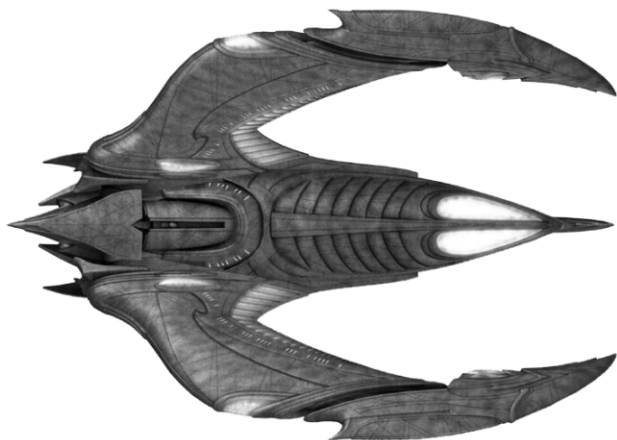
CLASS INFORMATION:

The Xindi-Insectoid warship was used by the aggressive Xindi-Insectoids in the 2150s.

It consisted of a small central core containing the drive system and three wing-like sections extending forward, mounted equidistantly along the fore-aft axis. The ships were heavily armed and had a highly decentralized layout, with no central control room, reflecting the non-hierarchical nature of Insectoid culture. There was at least one room equipped with a viewscreen for communications. As with many other Xindi starships, the Insectoid vessel could use subspace vortices for travel.

In early 2154, the *Enterprise* NX-01 discovered the wreckage of a crashed Insectoid warship en route to Azati Prime. Insectoid ships participated in the attack on *Enterprise* at Azati Prime, as well as the later battles to stop the Xindi superweapon.





SIZE COMPARISON

0 100m 200m 300m



Xindi-Aquatic Cruiser: 1,800m (Not to scale)



D'Kyr: 600m



Surak: 600m



Kumari: 360m



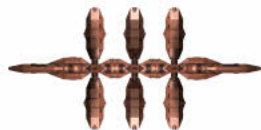
Y Class: 270m



J Class: 230m



Klingon D4: 205m



Suliban Salvage Ship: 190m



Romulan Early Bird-of-Prey: 165m



Stealth Cruiser: 106m



Vahklas: 110m



Klingon Early Bird-of-Prey: 115m



Insectoid Warship: 120m



Raptor: 145m



Klingon D5: 155m

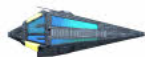
0 10m 20m 30m



Long Cell Ship: 40m



Romulan Drone: 35m



Tholian Starship: 15m



Suliban Cell Ship: 2.6m

BIBLIOGRAPHY

BOOKS, MAGAZINES & EBOOKS

Decipher Starships Sourcebook - *by Bridges et al*
Spacedock Ship Recognition Manual - *by Stephen S. Long*
Starship Recognition Manual Beta - *by Robert Hamilton III*
Starship Spotter - *by Adam Lebowitz & Rob Bonchune*
Star Trek Encyclopedia - *by Michael Okuda, Denise Okuda and Debbie Mirek*
Star Trek Fact Files & Star Trek: The Magazine
Star Trek Ships of the Line - *by Doug Drexler & Michael Okuda*
Star Trek Ships of the Line Calendar 2006
Star Trek Star Charts - *by Geoffrey Mandel*
ST:DS9 Technical Manual - *by Herman Zimmerman, Doug Drexler & Rick Sternbach*
ST:TNG Technical Manual - *by Rick Sternbach & Michael Okuda*

WEBSITES

[Daystrom Institute Technical Library](#)
[Drex Files](#)
[Eavesdropping with Johnny](#)
[Ex Astris Scientia](#)
[Joe's Enterprise Season 5 Development Blog](#)
[Memory Alpha](#)
[Memory Beta](#)
[Neutral Zone Starship Database](#)
[SciFi-Meshes.com Forum](#)
[Starship Schematic Database](#)
[Star Trek.com](#)
[Star Trek LCARS Blueprints Database](#)

IMAGE SOURCES

Colour side-views from Ex Astris Scientia and Animaniac.
Emblems from Ex Astris Scientia and Star Trek Minutiae, except p.4 ECS Fortunate emblem from Okudagrams.com.
Tholian emblem originally by Geoffrey Mandel.
EARTH J CLASS - *Designed by John Eaves & Brandon MacDougall*
Page 2: L - Brandon MacDougall, R - DITL.org,
Page 3: Schematics - Doug Drexler
EARTH Y CLASS - *Designed by John Eaves & Pierre Drolet*
Page 4: L - Neutral Zone.de, R - Neutral Zone.de,
Page 5: Schematics - Doug Drexler
VULCAN D'KYR CLASS - *Designed by John Eaves*
Page 6: L - Ex Astris Scientia, R - Neutral Zone.de,
Page 7: Schematics - Joe Hodkiss
VULCAN SUUROK CLASS - *Designed by Doug Drexler*
Page 8: L - Ex Astris Scientia, R - Memory Alpha,
Page 9: Schematics - Neutral Zone.de
VULCAN VAHKLAS CLASS -
Page 10: L - Ex Astris Scientia, R - Ex Astris Scientia,
Page 11: Schematics - Doug Drexler

ANDORIAN KUMARI CLASS -

Page 12: L - Rob Bonchune, R - Memory Alpha,
Page 13: Schematics - Joe Hodkiss

KLINGON BIRD-OF-PREY - *Designed by John Eaves*

Page 14: L - DITL.org, R - DITL.org,
Page 15: Schematics - Doug Drexler

KLINGON D4 CLASS - *Designed by John Eaves & Koji Kuramura*

Page 16: L - Doug Drexler, R - Ships of the Line calendar '06,
Page 17: Schematics - Rob Bonchune (edited by Fenix)

KLINGON D5 CLASS -

Page 18: L - Neutral Zone.de, R - Neutral Zone.de,
Page 19: Schematics - Joe Hodkiss

KLINGON RAPTOR CLASS - *Designed by John Eaves*

Page 20: L - Neutral Zone.de, R - Star Trek: The Magazine,
Page 21: Schematics - Starship Schematic Database

ROMULAN BIRD-OF-PREY - *Designed by John Eaves*

Page 22: L - Ex Astris Scientia, R - DITL.org,
Page 23: Schematics - Starship Schematic Database

ROMULAN DRONE -

Page 24: L - DITL.org, R - Animaniac,
Page 25: Schematics - Animaniac

THOLIAN STARSHIP - *Designed by John Eaves*

Page 26: L - Neutral Zone.de, R - Memory Alpha,
Page 27: Schematics - Animaniac

SULIBAN CELL SHIP (SHORT) - *Designed by John Eaves*

Page 28: L - Neutral Zone.de, R - DITL.org,
Page 29: Schematics - Doug Drexler

SULIBAN CELL SHIP (LONG) - *Designed by John Eaves*

Page 30: L - Neutral Zone.de, R - DITL.org,
Page 31: Schematics - Doug Drexler

SULIBAN SALVAGE SHIP - *Designed by John Eaves*

Page 32: L - Memory Alpha, R - DITL.org,
Page 33: Schematics - Doug Drexler

SULIBAN STEALTH CRUISER - *Designed by John Eaves*

Page 34: L - Neutral Zone.de, R - Neutral Zone.de,
Page 35: Schematics - Doug Drexler

XINDI-AQUATIC CRUISER -

Page 36: L - Neutral Zone.de, R - Memory Alpha,
Page 37: Schematics - Animaniac

XINDI-INSECTOID WARSHIP - *Designed by John Eaves*

Page 38: L - Ex Astris Scientia, R - Jörg Hillebrand,
Page 39: Schematics - Animaniac

SIZE COMPARISON CHART - Page 40: Adapted from the Fleet Charts of Bernd Schneider (Ex Astris Scientia).

Created with Serif PagePlus software. This ebook was produced purely for reference and fun, on a non-profit, not-for-sale basis. All copyrights are acknowledged and no infringement is intended. Star Trek and all photos, symbols and designs copyright Paramount Pictures as far as I am aware.

This document © Mark Gill 2008-10.



trek.escape-committee.co.uk